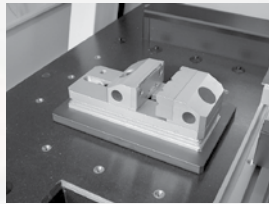
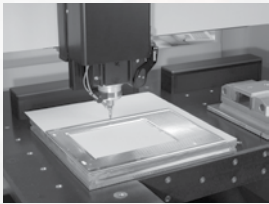
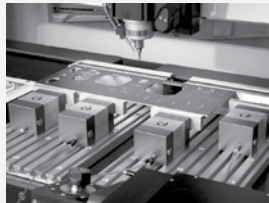
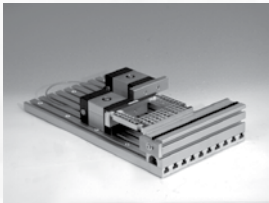
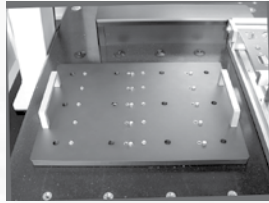
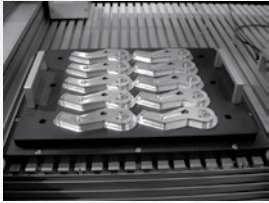


## Reduce your setup-time from 30 minutes to 30 seconds.

Completely change your workholding in a few seconds. Datron Quick-Pallets mount onto the machining bed securely, and register automatically in the X, Y, and Z axis, every time, all the time. Light-weight pallets are available for different workholding solutions, including pneumatic short stroke clamps, Vacumate™ vacuum plates, and blank panels for custom workholding solutions. All Quick-Pallets are easily lifted by hand and provide for a convenient and cost-effective solution to an old problem.

**Welcome to the next generation of high-efficiency workholding.**



### Add agility to your manufacturing:

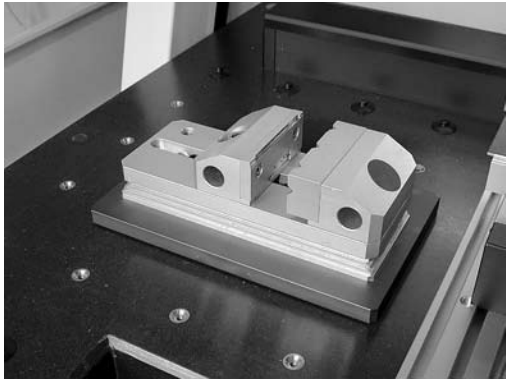
- Fast job set-up
- Easy to lift on and off
- Change parts quickly
- Easy adaptation to new challenges
- Light weight and low cost

**The power to respond to frequent job changes.**

**Call toll free 888.262.2833**

**WARNING:** Utilizing the power and flexibility of **DATRON** with QuickPallets™ may be hazardous to your competition.

# Quick-Pallets™



## Easy to work with:

When placing the Quick-Pallet on the machining bed, you will find the same spot every time, all the time. Insuring location repeatability, the Quick-Pallets are keyed using a beveled boss-in-cavity system. A small vacuum pump is required to hold the Quick-Pallet in place during machining operations. Datron's recently introduced Raptor™ Class machines are available from the factory with the Quick-Pallet receptacles and the vacuum pump pre-installed. Having the workholding built into the machining system provides for optimal cost savings and utmost flexibility.



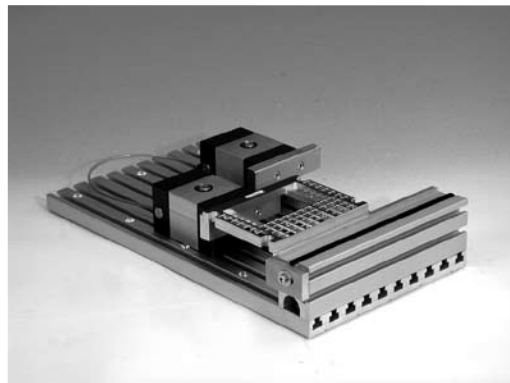
## Available Quick-Pallet configurations include:

- T-Nut configurations with pneumatic short stroke clamps
- Vacuumate vacuum-table setup for machining flat stock
- Machining vise module for stronger holding forces
- Empty pallet configuration for custom fixtures
- Retro-fit kits for existing machinery

## Fast and flexible:

Quick-Pallets come in different sizes and configurations. Whether you need a workholding vise or a custom tray configuration for fast pallet changes, Quick-Pallets offer a fast and cost-effective solution.

Quick-Pallets are secured to the machining bed via vacuum, and keyed to a fixed position. Changing a pallet involves removing the pallet, sweeping the surface, and installing the new pallet, a process that takes about 12 seconds.



## You will never go back:

Regardless of your manufacturing batch size, Quick-Pallets offer clear advantages and time savings outside of the usually considered machining cycles. Interrupting a major production for the one emergency job that always has a tendency of showing up is no longer a hassle.

Imagine the flexibility you will experience using this truly universal workholding solution. Once you have experienced the empowerment, you will thank yourself for taking the step. You will also wonder how you ever got along without it.

